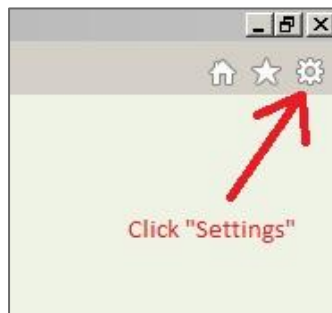


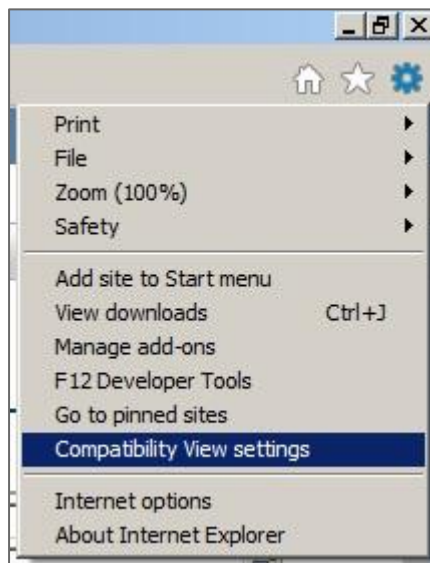
If you are experiencing difficulty logging on to The LPS Scotland website using **Internet Explorer 11** you can resolve this by adding The LPS Scotland website to the "Compatibility View" list.

1) Navigate to <http://www.lettingprotectionscotland.com>

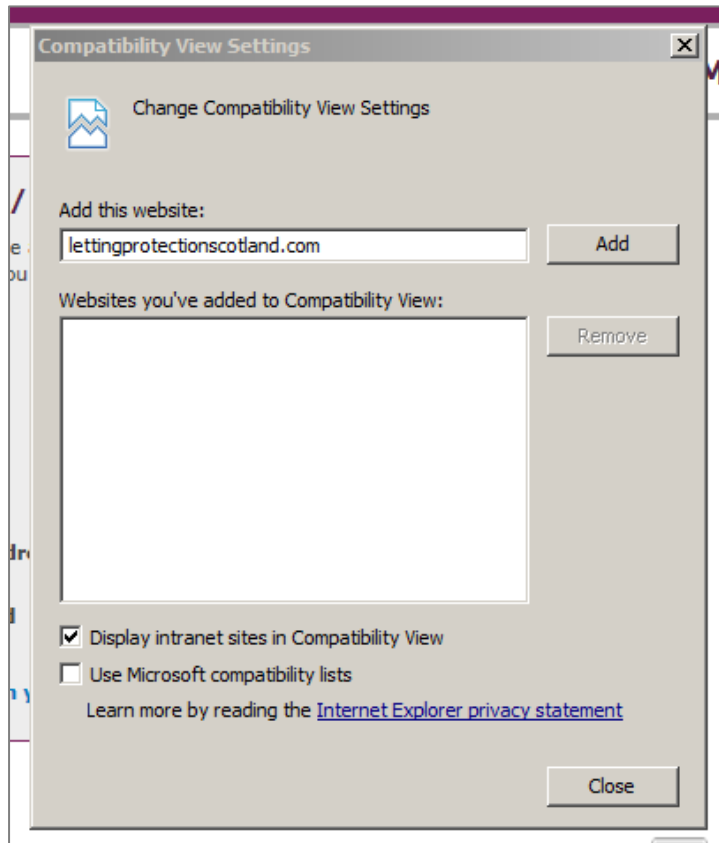
2) Click the "Settings" icon in the top-right corner:



3) Select "Compatibility View settings":

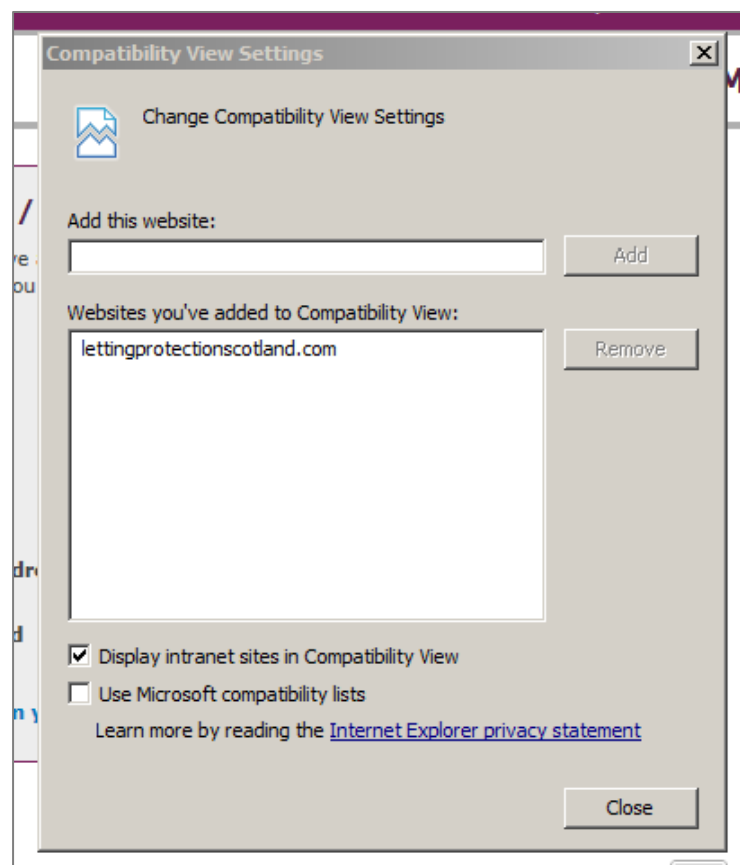


4) A dialog box will pop up. It should be pre-populated with The LPS Scotland web address (URL):



If the top box does not contain the web address already, simply type "lettingprotectionscotland.com" in the box.

5) Click "Add":



6) Click "Close"



You should now be able to log on to www.lettingprotectionscotland.com as normal.

Further information can be found in the [Microsoft Internet Explorer Privacy Statement](#) and the MSDN document "[Understanding the Compatibility View List](#)"